

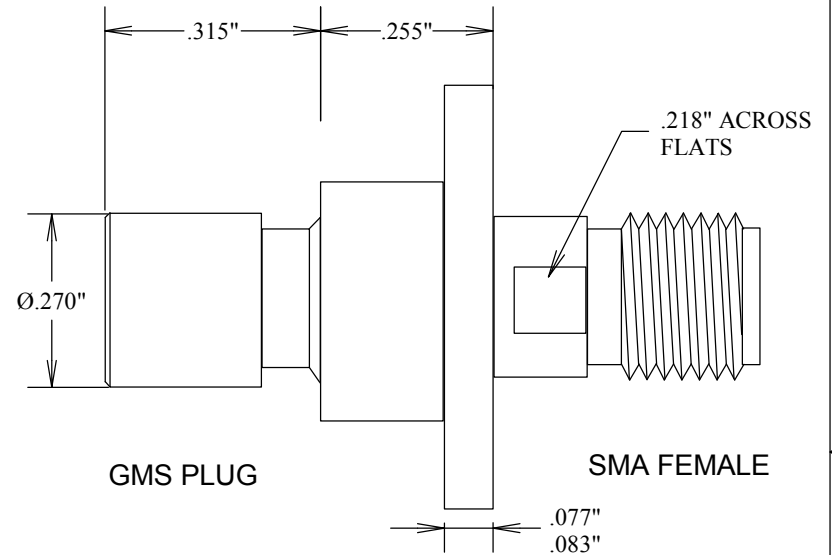
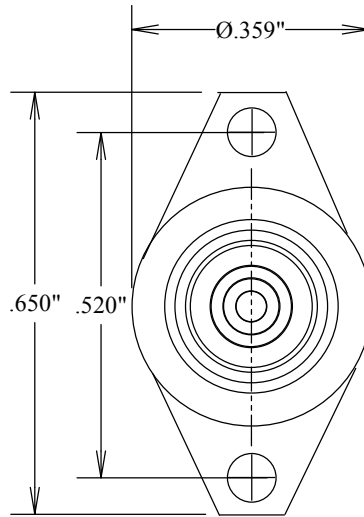
SPECIFICATIONS

ELECTRICAL
 50 OHMS
 VSWR 1.20:1 MAX
 FREQUENCY: DC-23 GHZ

MECHANICAL

ENVIRONMENTAL
 -65 DEG C TO +165 DEG C

MATERIALS
 BODY: PASSIVATED STAINLESS STEEL
 CENTER CONTACT: AU PLATED &
 NICKEL PLATED BeCu
 INSULATION: TEFLON
 DURABILITY: 5000 CYCLES



				S. M. ELECTRONICS L.L.C			
				FAIRVIEW, TX 75069 WWW.SMELECTRONICSLLC.COM			
				TITLE			
				ADAPTER, GMS PLUG-SMA FEMALE 2 HOLE			
SIZE		CAGE CODE		DWG NO		REV	
A		3FKR5		SM2924		--	
SCALE				SHEET			