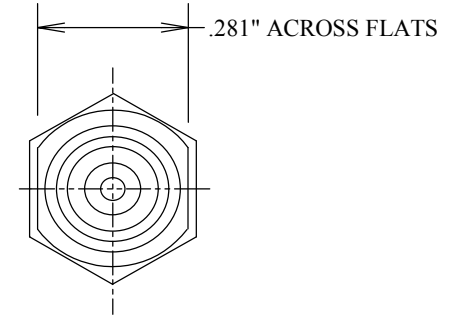
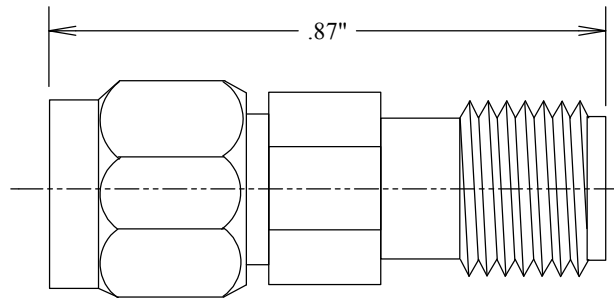


SPECIFICATIONS

ELECTRICAL:

FREQUENCY: 0-40 GHZ
 VSWR @ 18 GHZ: 1.30:1 MAX
 VSWR @ 40 GHZ: 1.40:1 MAX
 POWER (AVG) 2 WATT @ 25°C,
 POWER DERATES LINEARLY 0.2W @ 125°C
 IMPEDANCE: 50 OHMS
 ATTENUATION ACCURACY:
 +/- .8 DB 0-26GHZ
 +/- 1DB 40 GHZ



MECHANICAL:

MATERIAL BODY: PASSIVATED STAINLESS STEEL
 MATERIAL CONTACTS: BeCu
 CENTER CONTACT: GOLD PLATED PER MIL-G-45204
 TEMP: -65°C TO +125°C

| | | | | | |
|----------|-----------|------------------|-------|---|--|
| | | | | S. M. ELECTRONICS L.L.C. | |
| | | | | FAIRVIEW, TX WWW.SMELECTRONICSLLC.COM | |
| | | | | TITLE | |
| | | | | ATTENUATOR 2.92 M/F 40GHZ 2 WATTS | |
| SIZE | CAGE CODE | DWG NO | REV | | |
| A | | SA4016-XX | -- | | |
| SCALE | | | SHEET | | |