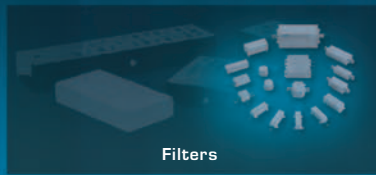


Subsystems



Variable Attenuators & RF Switches

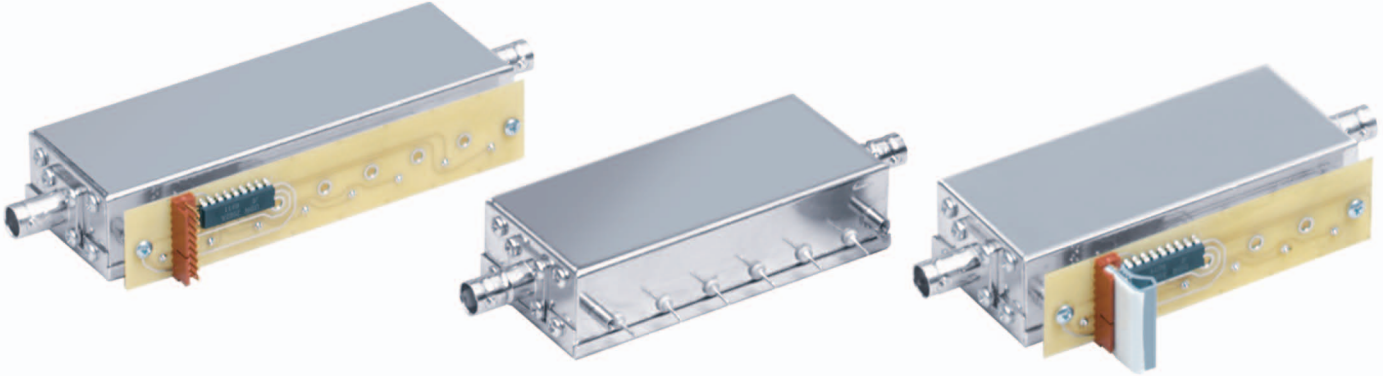


Filters



Fixed Attenuators

## ▶ PROGRAMMABLE ATTENUATORS



### ▶ HIGH ACCURACY PROGRAMMABLE ATTENUATORS

Model	Frequency Range	Attenuation Range/Step Size	VSWR	Connectors
50031A-1S12V	DC-1GHz	0-31dB in 1dB steps	1.33:1	SMA
50063A-1S12V	DC-1GHz	0-63dB in 1dB steps	1.33:1	SMA
500127A-1S12V	DC-1GHz	0-12dB in 1dB steps	1.33:1	SMA

#### CELL ACCURACY

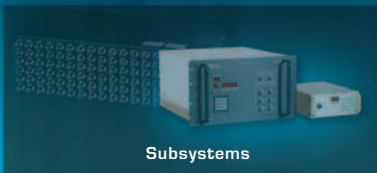
	Below 30dB	Above 30dB	
DC-500MHz	+/- 0.1 dB	+/- 0.2 dB	
DC-1000MHz	+/- 0.2 dB	+/- 0.3 dB	

#### STEP-TO-STEP ACCURACY

Example:127dB in 1dB steps	+/- 0.1 dB below 30dB
	+/- 0.2 dB below 60dB
	+/- 0.3 dB below 80dB
	+/- 0.5 dB below 95dB
	+/- 1.0 dB below 127dB

### ▶ RELAY PROGRAMMABLE ATTENUATORS

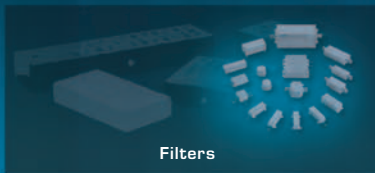
Model	Frequency Range	Attenuation Range/Step Size	VSWR	Connectors
RPA-53031-1	DC-3GHz	0-31dB in 1dB steps	1.5:1	SMA or N
RPA-53063-1	DC-3GHz	0-63dB in 1dB steps	1.5:1	SMA or N
RPA-53095-1	DC-3GHz	0-95dB in 1dB steps	1.5:1	SMA or N
RPA-52263-1 <b>New</b>	DC-2.2GHz	0-63dB in 1dB stpes	1.4:1	SMA
RPA-522127-1 <b>New</b>	DC-2.2GHz	0-127dB in 1dB steps	1.4:1	SMA



Subsystems



▶ Variable Attenuators & RF Switches



Filters



Fixed Attenuators

## ▶ PROGRAMMABLE ATTENUATORS



### ▶ SOLID STATE PROGRAMMABLE ATTENUATORS

Model	Frequency Range	Attenuation Range/Step Size	VSWR	Connectors	Switching Speed
SPA-52063-1	400-2000MHz	0-63dB in 1dB steps	1.5:1	SMA female	2 microseconds
SPA-52095-1	400-2000MHz	0-95dB in 1dB steps	1.5:1	SMA female	2 microseconds
SPA-520127-1	400-2000MHz	0-127dB in 1dB steps	1.5:1	SMA female	2 microseconds
SPA-53031-1	800-3000MHz	0-31dB in 1dB steps	1.5:1	SMA female	2 microseconds
SPA-53063-1	800-3000MHz	0-63dB in 1dB steps	1.5:1	SMA female	2 microseconds
SPA-53095-1	800-3000MHz	0-95dB in 1dB steps	1.5:1	SMA female	2 microseconds
SPA-530127-1	800-3000MHz	0-127dB in 1dB steps	1.5:1	SMA female	2 microseconds

### ▶ GPIB PROGRAMMABLE ATTENUATOR ASSEMBLIES

Model	Frequency Range	Attenuation Range/Step Size	VSWR	Connectors
GRPA-53063-1 <b>New</b>	DC-3000MHz	0-63dB in 1dB steps	1.5:1	SMA or N
GSPA-52095-1 <b>New</b>	800-3000MHz	0-63dB in 1dB steps	1.5:1	SMA or N

Trilithic designs RF Distribution Systems, RF Simulation/Loading Systems and Programmable Attenuator Sub Assemblies.