

# SPECIFICATIONS

## ELECTRICAL:

FREQUENCY: 0-40 GHZ  
 IMPEDANCE: 50 OHMS  
 OP. TEMP RANGE: -55° to +125°C

## MECHANICAL:

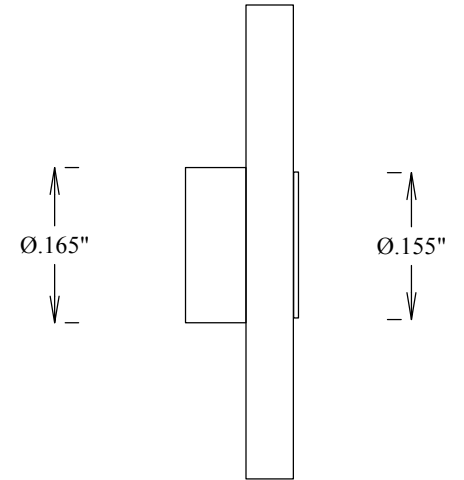
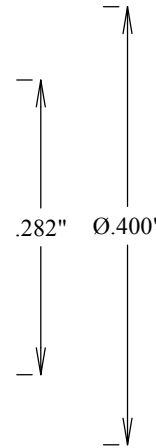
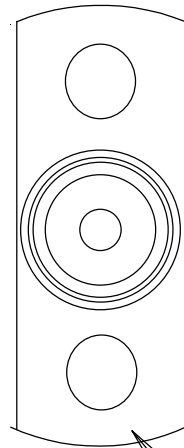
MATERIAL: PASSIVATED S STEEL  
 INTERFACE: SMP DESC 94007  
 FULL DETENTE  
 FORCE TO ENGAGE: 15 LBS MAX  
 FORCE TO DISENGAGE: 5LBS MIN  
 ROHS COMPLIANT

← .165" →

→ .120" OAL ←

→ .045" ←

→ .004" ←



Ø.073" 2X

				<b>S. M. ELECTRONICS L.L.C.</b>	
				FAIRVIEW, TX 75069 <a href="http://WWW.SMELECTRONICS.US">WWW.SMELECTRONICS.US</a>	
				TITLE	
				<b>SMP MALE FULL DETENTE SHROUD .282 SPACING</b>	
SIZE	CAGE CODE	DWG NO	REV		
<b>A</b>	<b>3FKR5</b>	<b>SC5302</b>	<b>--</b>		
SCALE			SHEET		