

# SPECIFICATIONS

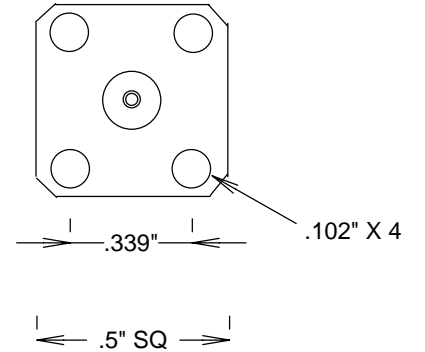
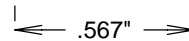
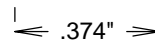
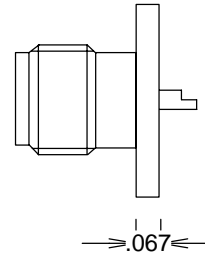
## ELECTRICAL:

FREQUENCY: 0-18 GHZ  
 IMPEDANCE: 50 OHMS  
 OP. TEMP RANGE: -55C to +155C

## MECHANICAL:

MATERIAL BODY: STAINLESS STEEL AU PLATING 3μ"  
 CENTER CONTACT: BeCu GOLD PLATED 50μ"  
 INSULATOR: TEFLON  
 INTERFACE: MIL-STD-883A

SMA-F



**S. M. ELECTRONICS**

FAIRVIEW, TX 75069 WWW.SMELECTRONICS.US

TITLE

**SMA PANEL MOUNT SOLDER POT**

SIZE	CAGE CODE	DWG NO	REV
<b>A</b>	<b>3FKR5</b>	<b>SC7505</b>	--

SCALE	SHEET
-------	-------