

SPECIFICATIONS

ELECTRICAL:

FREQUENCY: 0-11 GHZ
 VSWR 1.3:1 MAX
 IMPEDANCE: 50 OHMS

MECHANICAL:

MATERIAL BODY: Ni PLATED BRASS
 CENTER CONTACT: BeCu
 CONTACT PLATING: Au MIL-G-45204
 DIELECTRIC: PTFE
 INTERFACE: MIL-STD-348B
 CAPTIVE CONTACT
 ROHS COMPLIANT
 OP. TEMP RANGE: -55°C- +155°C

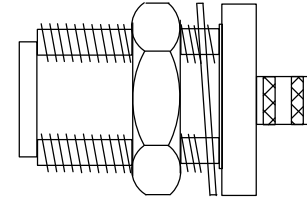
CABLES: RG174, RG316

ASSEMBLY:

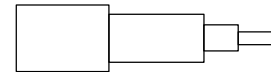
TRIM CABLE AS SHOWN;
 SLIDE ON CRIMP SLEEVE,
 SOLDER CONTACT ON CONDUCTOR,
 FLIUSH WITH DIELECTRIC;
 INSERT CABLE INTO BODY UNTIL IT SNAPS;
 CRIMP

1.45"

.88"



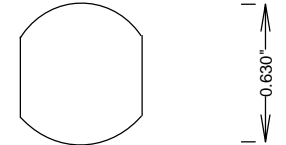
.120"



.300"

.420"

STRIPPING DIMENSIONS



0.630"

.536"

RECOMMENDED CUTOUT

				S. M. ELECTRONICS L.L.C.			
				FAIRVIEW, TX 75069 WWW.SMELECTRONICS.US			
				TITLE			
				N-F BULKHEAD CRIMP RG174, RG316			
SIZE		CAGE CODE		DWG NO		REV	
A		3FKR5		SC9331		--	
SCALE						SHEET	