

# SPECIFICATIONS

## ELECTRICAL:

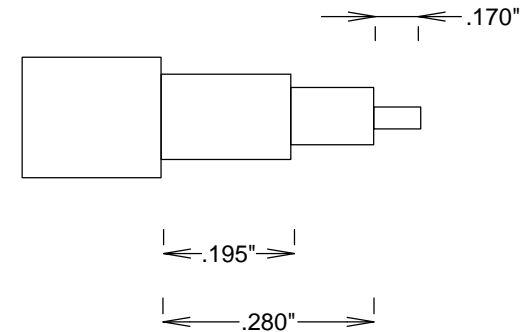
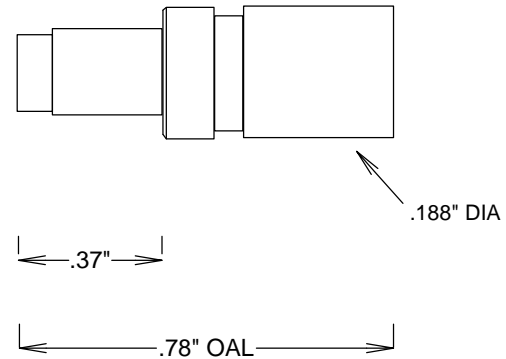
FREQUENCY: 0-6 GHZ  
 VSWR 1.25:1 MAX  
 IMPEDANCE: 50 OHMS  
 OP. TEMP RANGE: -55C to +125C

## MECHANICAL:

MATERIAL BODY: BRASS AU PLATING  
 CENTER CONTACT: BeCu  
 CONTACT PLATING: Au MIL-G-45204  
 CAPTIVATED CONTACT  
 INSULATOR: TEFLON  
 ROHS COMPLIANT

## ASSEMBLY

TRIM CABLE AS SHOWN,  
 SLIDE CRIMP SLEEVE ON CABLE,  
 SOLDER ON CONTACT,  
 INSERT CABLE INTO BODY,  
 CRIMP



STRIPPING DIMENSIONS

				<b>S. M. ELECTRONICS L.L.C.</b>	
				FAIRVIEW, TX 75069 WWW.SMELECTRONICS.US	
				TITLE	
				<b>MCX-JACK RG178 CRIMP</b>	
SIZE	CAGE CODE	DWG NO	REV		
<b>A</b>	<b>3FKR5</b>	<b>SC9443</b>	<b>--</b>		
SCALE			SHEET		