

SPECIFICATIONS

ELECTRICAL:

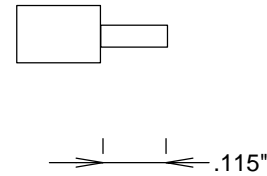
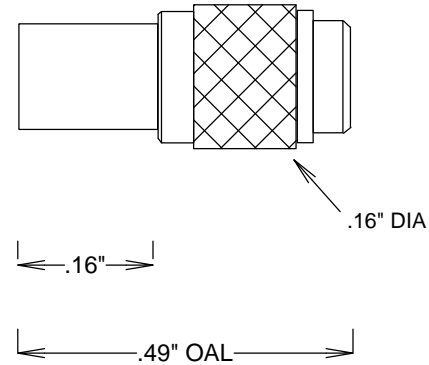
FREQUENCY: 0-6 GHZ
 VSWR 1.25:1 MAX
 IMPEDANCE: 50 OHMS
 OP. TEMP RANGE: -55C to +125C

MECHANICAL:

MATERIAL BODY: BRASS AU PLATING
 CENTER CONTACT: Brass
 CONTACT PLATING: Au MIL-G-45204
 INSULATOR: TEFLON

ASSEMBLY

TRIM CABLE AS SHOWN,
 SOLDER ON CONTACT, .015" GAP
 BETWEEN CONTACT & DIELECTRIC
 INSERT CABLE INTO BODY
 SOLDER JACKET TO BODY, KEEPING END
 OF CABLE FLUSH WITH DIELECTRIC



STRIPPING DIMENSIONS

				S. M. ELECTRONICS L.L.C.	
				FAIRVIEW, TX 75069 WWW.SMELECTRONICS.US	
				TITLE	
				MMCX-PLUG .086 SR DIRECT SOLDER	
SIZE	CAGE CODE	DWG NO	REV		
A	3FKR5	SC9511	--		
SCALE			SHEET		