

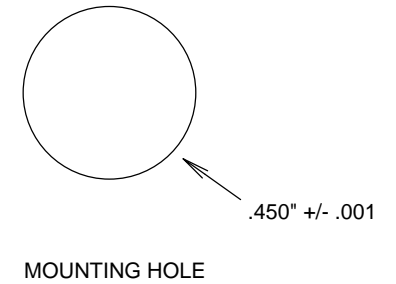
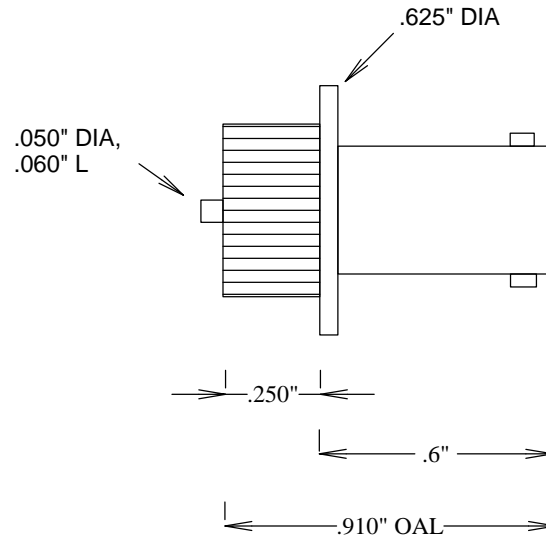
SPECIFICATIONS

ELECTRICAL:

FREQUENCY: 0-4 GHZ
 IMPEDANCE: 50 OHMS

MECHANICAL:

MATERIAL BODY: Ni PLATED BRASS
 CENTER CONTACT: BeCu
 CONTACT PLATING: Si QQ-S-365
 CAPTIVATED CONTACT
 INSULATOR: TEFLON
 INTERFACE: MIL-STD-883A
 ROHS COMPLIANT
 OP. TEMP RANGE: -55°C to +155°C



.200" MAX PANEL

				S. M. ELECTRONICS L.L.C.			
				FAIRVIEW, TX 75069 WWW.SMELECTRONICS.US			
				TITLE			
				BNC PRESSMOUNT			
SIZE		CAGE CODE		DWG NO		REV	
A		3FKR5		SC6202		--	
SCALE						SHEET	