


TRILITHIC
Specification Sheet
MODEL XDC-5XX*2-2-18-SMA-R
Ultra-Broadband Directional Couplers

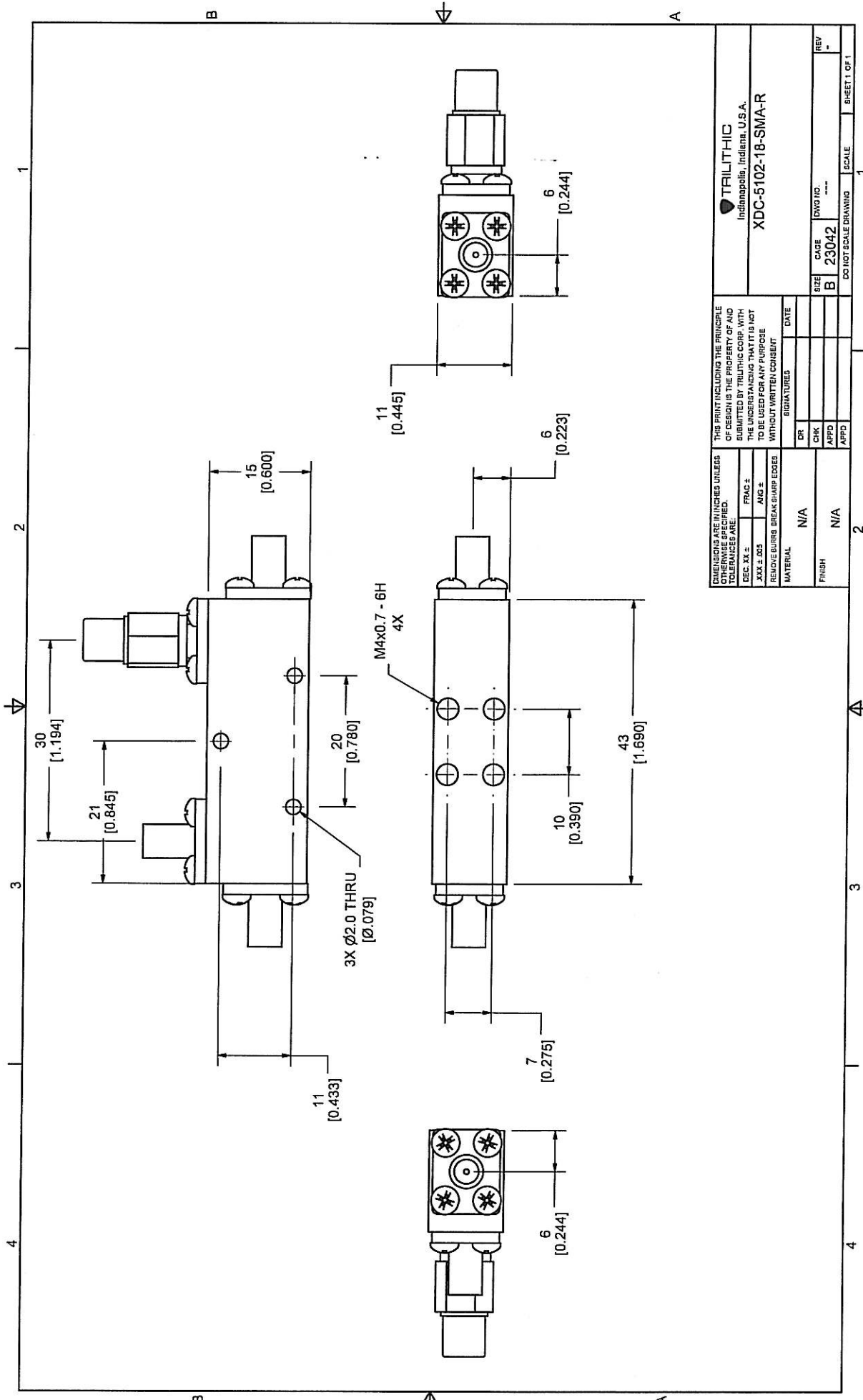
Frequency Range: 2-18GHz
Impedance: 50 Ohms nominal
Coupling: 10dB +/- 1.0dB maximum
 20dB +/- 1.0dB maximum
 30dB +/- 1.0 dB maximum
Frequency Sensitivity: +/- 1.0dB maximum
Insertion Loss: 10dB 0.7dB maximum
 20dB 0.7dB maximum
 30dB 0.7dB maximum
Directivity: 12dB minimum
VSWR: 1.50:1 maximum
Power Input: 50 Watts Fwd Power
RF Connectors: SMA Female
Operating Temperature: -55deg. C to +85 deg. C

* insert desired coupling value to replace XX

ECR/PRR #	Date	APPR

Approved By: _____

Approved Internet/Email Copy



DIMENSIONS ARE IN INCHES UNLESS OTHERWISE SPECIFIED. TOLERANCES ARE:		THIS PRINT INCLUDING THE PRINCIPLE OF DESIGN IS THE PROPERTY OF AND SUBMITTED BY TRILITHIC CORP. WITH THE UNDERSTANDING THAT IT IS NOT TO BE USED FOR ANY PURPOSE WITHOUT WRITTEN CONSENT	
DEC. XX ±	FRACTION	SIGNATURES	DATE
XXX ± .005	ANG ±	DR	
		CHK	
		APPD	
		APPD	
MATERIAL	N/A		
FINISH	N/A		
SIZE	CAGE	ENG. FIG.	REV
B	23042		-
DO NOT SCALE DRAWING			SCALE
			1
			2
			3
			4
			1
			1

TRILITHIC
 Indianapolis, Indiana, U.S.A.
 XDC-5102-18-SMA-R