



**Specification Sheet
MODEL XDC-5XX*2-8-SMA-R
Broadband Directional Couplers**

Frequency Range: 2-8 GHz

Impedance: 50 Ohms nominal

Coupling: 6dB +/- 1.0dB maximum
10dB +/- 1.0dB maximum
20dB +/- 1.0dB maximum
30dB +/- 1.0 dB maximum

Frequency Sensitivity: +/- 1.0dB maximum

Insertion Loss: 6dB 0.5dB maximum
10dB 0.5dB maximum
20dB 0.4dB maximum
30dB 0.4dB maximum

Directivity: 20dB minimum

VSWR: 1.20:1 maximum

Power Input: 50 Watts

RF Connectors: SMA Female

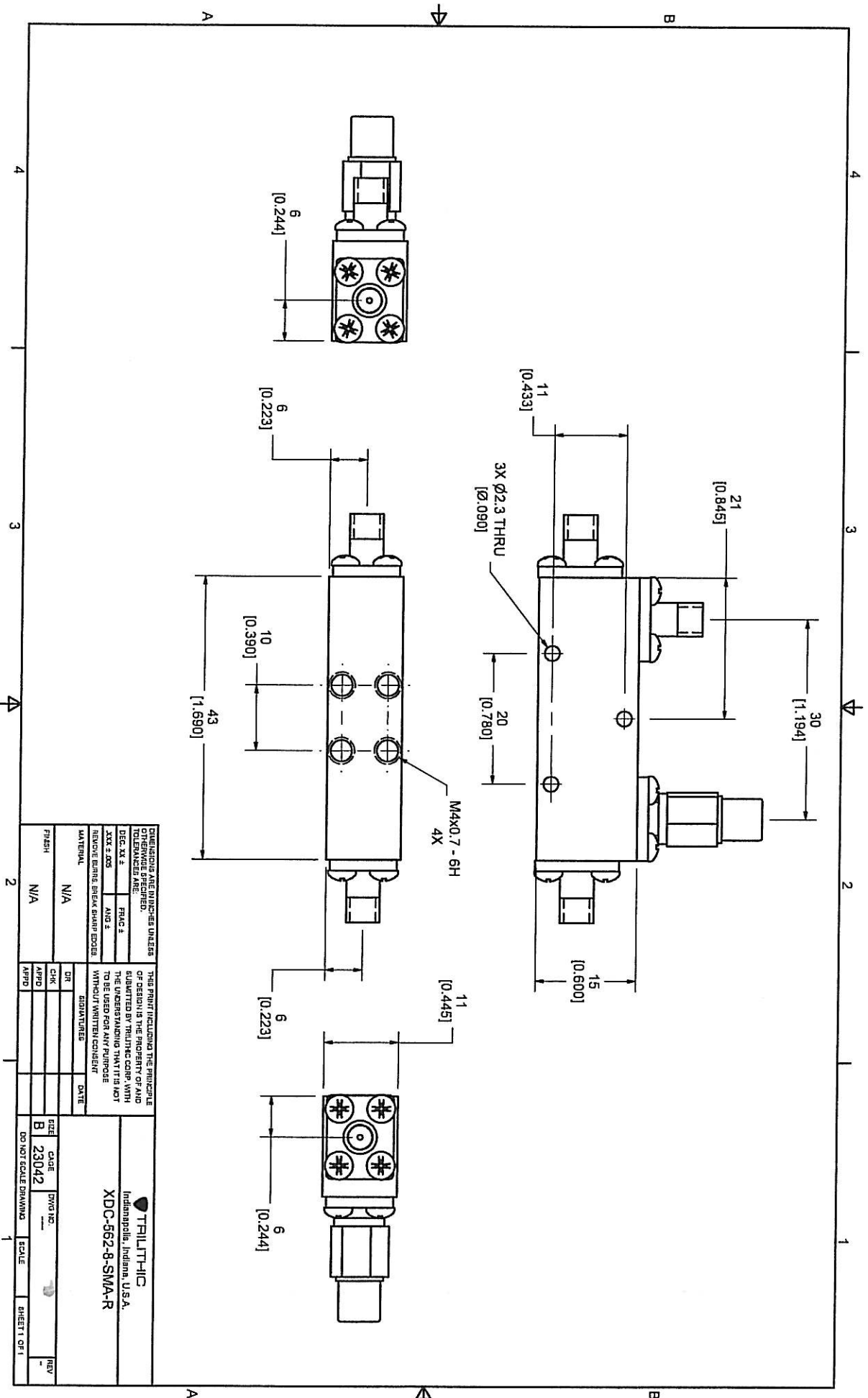
Operating Temperature: -55deg. C to +85 deg. C

* insert desired coupling value to replace XX

ECR/PRR #	Date	APPR

Approved By: _____

Approved Internet/Email Copy



DIMENSIONS ARE IN INCHES UNLESS OTHERWISE SPECIFIED. DIMENSIONS ARE FRACTIONS AND DECIMALS.		THIS PRINT INCLUDING THE FINISH OF DESIGN IS THE PROPERTY OF AND SUBMITTED BY TRILITHIC CORP. WITH THE UNDERSTANDING THAT IT IS NOT TO BE USED FOR ANY PURPOSE WITHOUT WRITTEN CONSENT.		TRILITHIC Indianapolis, Indiana, U.S.A. XDC-562-8-SMA-R	
DESIGN	DATE	DR	DATE	SIZE	CODE
FINISH	N/A	CHK		B	23042
		APPD		DO NOT SCALE DRAWING	
				SCALE	SHEET 1 OF 1