


TRILITHIC
Specification Sheet
MODEL XDC-5XX*8-2.5-N-R
Communication Directional Couplers

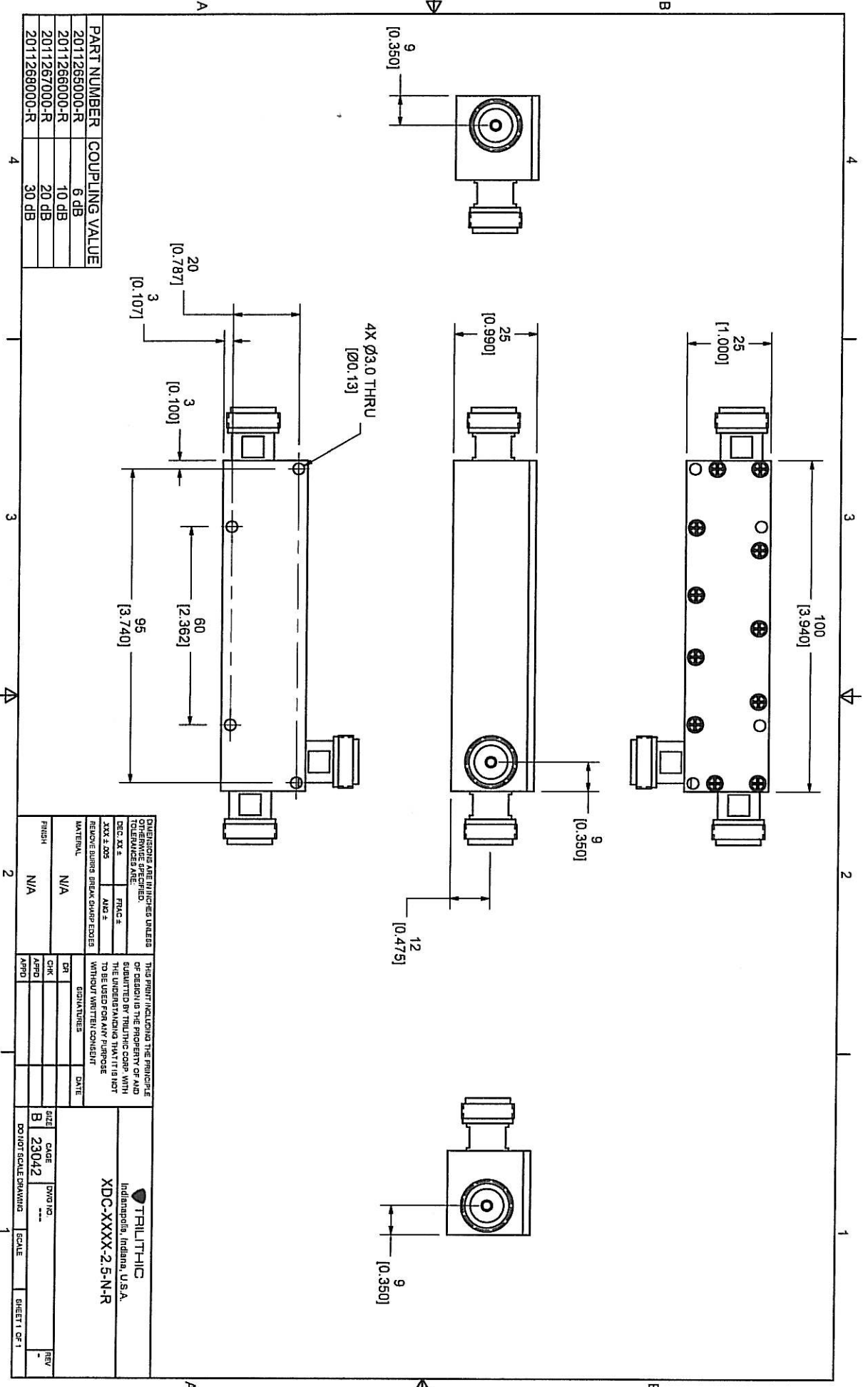
Frequency Range: 0.8-2.5GHz
Impedance: 50 Ohms nominal
Coupling: 6dB +/- 0.5dB maximum
 10dB +/- 0.8 dB maximum
 20dB +/-1.0 dB maximum
 30dB +/-1.0 dB maximum
Frequency Sensitivity: +/- 0.7dB maximum
Insertion Loss: 6dB 0.5dB maximum
 10dB 0.5dB maximum
 20dB 0.4dB maximum
 30dB 0.4dB maximum
Directivity: 20dB minimum
VSWR: 1.25:1 maximum
Power Input: 60 Watts
RF Connectors: N Female
Operating Temperature: -20deg. C to +70 deg. C

* insert desired coupling value to replace XX

ECR/PRR #	Date	APPR

Approved By: _____

Approved Internet/Email Copy



PART NUMBER	COUPLING VALUE
2011266000-R	6 DB
2011266000-R	10 DB
2011267000-R	20 DB
2011268000-R	30 DB

DIMENSIONS ARE IN INCHES UNLESS OTHERWISE SPECIFIED	
TOLERANCES ARE:	
DEC. XX ±	FRACTION ±
XXX ± .005	MILS ±
REMOVE SHARP BREAK SHARP EDGES	
MATERIAL	FINISH
N/A	N/A

THIS PRINT INCLUDING THE PRINCIPLE OF DESIGN IS THE PROPERTY OF AND SUBMITTED BY TRIJULINC CORP. WITH THE UNDERSTANDING THAT IT IS NOT TO BE USED FOR ANY PURPOSE WITHOUT WRITTEN CONSENT	
DESIGNER	DATE
CHK	
APPD	
APPD	

 Indianapolis, Indiana, U.S.A.	
XDC-XXXX-2.5-N-R	
DATE	SIZE
23042	B
DO NOT SCALE DRAWING	SCALE
1	SHEET 1 OF 1