



TRILITHIC

Specification Sheet

MODEL XDC-5XX*5-2-SMA-R

Broadband Directional Couplers

Frequency Range: 0.5-2.0 GHz

Impedance: 50 Ohms nominal

Coupling:
 6dB +/- 1.0dB maximum
 10dB +/- 1.0dB maximum
 20dB +/- 1.0dB maximum
 30dB +/- 1.0 dB maximum

Frequency Sensitivity: +/- 0.7dB maximum

Insertion Loss:
 6dB 0.5dB maximum
 10dB 0.5dB maximum
 20dB 0.4dB maximum
 30dB 0.4dB maximum

Directivity: 20dB minimum

VSWR: 1.20:1 maximum

Power Input: 50 Watts

RF Connectors: SMA Female

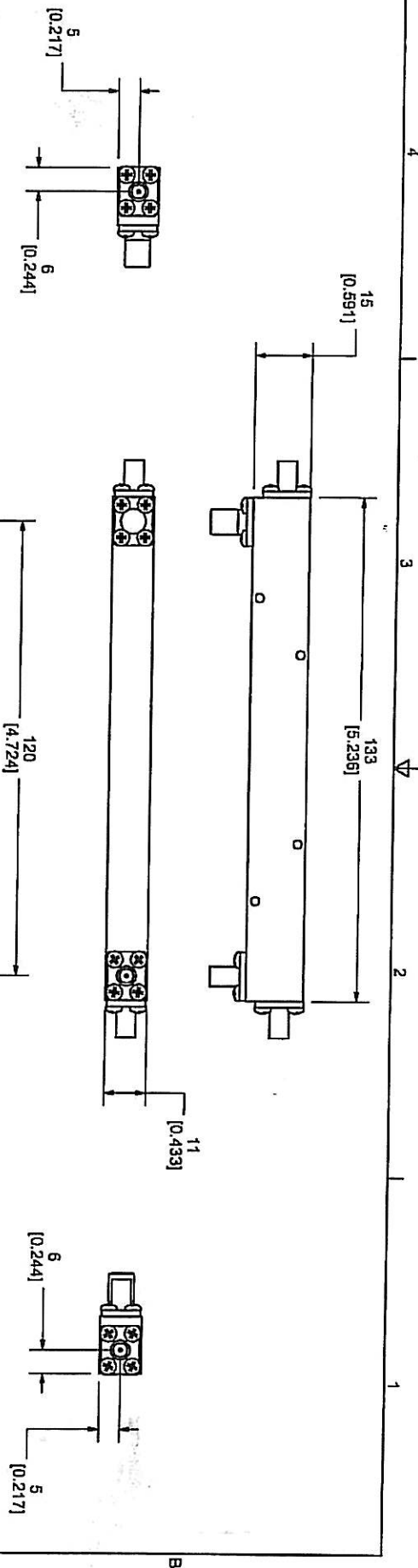
Operating Temperature: -55deg. C to +85 deg. C

* insert desired coupling value to replace XX

ECR/PRR #	Date	APPR

Approved By: _____

Approved Internet/Email Copy



P/N	COUPLING VALUE
2011272000-R	6 dB
2011273000-R	10 dB
2011274000-R	20 dB
2011275000-R	30 dB

4

3

2

1

DIMENSIONS ARE IN MILLIMETERS UNLESS OTHERWISE SPECIFIED TOLERANCES ARE: DECIMALS: ±0.25 FRACTIONS: ±0.10 HOLE DRILLING: ±0.10 HOLE POSITION: ±0.15 HOLE DIA: ±0.05 HOLE LOCATION: ±0.10 HOLE DIA: ±0.05 HOLE LOCATION: ±0.10 HOLE DIA: ±0.05 HOLE LOCATION: ±0.10		THIS PRINT INCLUDING THE PROLOGUE IS THE PROPERTY OF AND IS LOANED TO YOU BY TRILITHIC. IT IS TO BE USED FOR THE PROJECT AND NOT TO BE REPRODUCED OR TRANSMITTED IN ANY FORM OR BY ANY MEANS WITHOUT WRITTEN CONSENT.	
DATE	DESIGNED BY	DATE	DESIGNED BY
TRILITHIC Indianapolis, Indiana, U.S.A. OUT.0.5-2 GHz XDC-5X5-2-SMA-R		REV	REV
REV	REV		
B	23042	0040893000	
DATE OF NEXT EXAMINATION		SCALE	SHEET 1 OF 1

M2x0.4 - 6HV5
4X

4X Ø2.2 THRU
[Ø.087]

