

ADDITIONAL ACCESSORIES

406 - 512 MHz

ELECTRICAL SPECIFICATIONS

Model Number	2550/0	2550/4	2550/5	2550/5A	2550/6
Frequency Band (MHz)	406-512	406-512	406-512	406-512	406-512
Description	Hybrid Coupler	Hybrid 60 W Load	Hybrid 125 W Load	Hybrid 150 W Load	Hybrid 250 W Load
Input Power (each port)	150 W	60 W	125 W	150 W	250 W
Bandwidth	35 MHz	35 MHz	35 MHz	35 MHz	35 MHz
Insertion Loss	3.2 dB	3.2 dB	3.2 dB	3.2 dB	3.2 dB
Isolation Port-to-Port	25+ dB	25+ dB	25+ dB	25+ dB	25+ dB
Impedance	50 Ω	50 Ω	50 Ω	50 Ω	50 Ω
Max. VSWR	1.5:1	1.5:1	1.5:1	1.5:1	1.5:1
Temperature Range	- 22 to +140 °F - 30 to +60 ° C	- 22 to +140 °F - 30 to +60 ° C	- 22 to +140 °F - 30 to +60 ° C	- 22 to +140 °F - 30 to +60 ° C	- 22 to +140 °F - 30 to +60 ° C
List Price	\$460.00	\$550.00	\$740.00	\$795.00	\$905.00

MECHANICAL SPECIFICATIONS

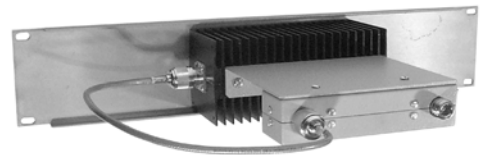
Panel Dimensions: Inches	N/A	3 1/2 x 19	3 1/2 x 19	3 1/2 x 19	8 3/4 x 19
Metric		89 x 483	89 x 483	89 x 483	223 x 483
Connectors: Input	N Female	N Female	N Female	N Female	N Female
Output	N Female	N Female	N Female	N Female	N Female
Finish	EMR Gray	EMR Gray	EMR Gray	EMR Gray	EMR Gray
Ship Weight: lbs.	5	6	9	10	12
kg.	2.3	2.8	4.1	4.6	5.5



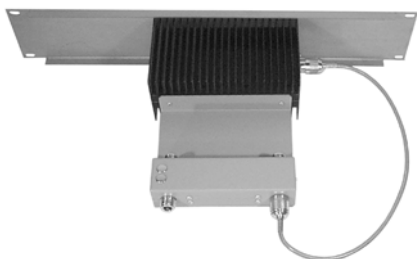
2550/0



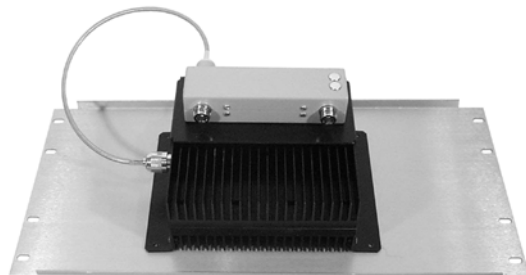
2550/4



2550/5



2550/5A



2550/6