

ELECTRICAL SPECIFICATIONS

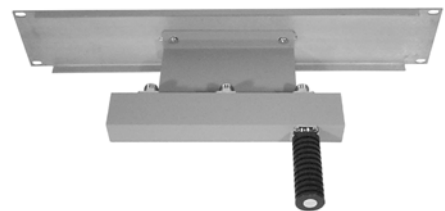
Model Number	2650/0	2650/4	2650/5	2650/5A	2650/6	2650/7 (Not Pictured)
Frequency Band (MHz)	806-960	806-960	806-960	806-960	806-960	806-960
Description	Hybrid Coupler	Hybrid 60 W Load	Hybrid 125 W Load	Hybrid 150 W Load	Hybrid 250 W Load	Hybrid 350 W Load
Input Power (each port)	150 W	60 W	125 W	150 W	250 W	350 W
Bandwidth	165 MHz	165 MHz	165 MHz	165 MHz	165 MHz	165 MHz
Insertion Loss	3.2 dB	3.2 dB	3.2 dB	3.2 dB	3.2 dB	3.2 dB
Isolation Port-to-Port	25+ dB	25+ dB	25+ dB	25+ dB	25+ dB	25+ dB
Impedance	50 Ω	50 Ω	50 Ω	50 Ω	50 Ω	50 Ω
Max. VSWR	1.5:1	1.5:1	1.5:1	1.5:1	1.5:1	1.5:1
Temperature Range	- 22 to +140 °F - 30 to +60 °C	- 22 to +140 °F - 30 to +60 °C	- 22 to +140 °F - 30 to +60 °C	- 22 to +140 °F - 30 to +60 °C	- 22 to +140 °F - 30 to +60 °C	- 22 to +140 °F - 30 to +60 °C
List Price	\$480.00	\$570.00	\$755.00	\$810.00	\$920.00	\$1,110.00

MECHANICAL SPECIFICATIONS

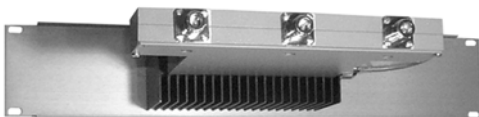
Panel Dimensions: Inches	N/A	3 1/2 x 19	3 1/2 x 19	3 1/2 x 19	5 1/4 x 19	8 3/4 x 19
Metric		89 x 483	89 x 483	89 x 483	134 x 483	223 x 483
Connectors: Input	N Female	N Female	N Female	N Female	N Female	N Female
Output	N Female	N Female	N Female	N Female	N Female	N Female
Finish	EMR Gray	EMR Gray	EMR Gray	EMR Gray	EMR Gray	EMR Gray



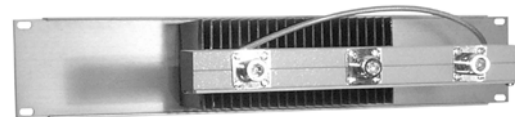
2650/0



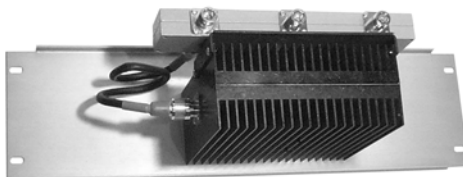
2650/4



2650/5



2650/5A



2650/6