

# INTERMODULATION CONTROL DEVICES

## 150 - 225 MHz

Model No. List Price	Description	Frequency	Pwr: Input Refl	Bandwidth: Fixed	Insertion Loss	Isolation	Load Termination	Actual Dimensions Inches Metric	Ship Wt. lbs kg.
7430/1S \$360.00	Single Isolator, 10 Watt Load	150-225	20W 10 W	See Page 38 Figure 3 & 4	0.40 dB	35 + dB	10 W	1 1/2 x 3 1/2 x 2 1/2 39 x 89 x 64	3 1.4
7440/0 \$390.00	Circulator, 50 Watts	150-225	50 W -	See Page 38 Figure 3 & 4	0.30 dB	35 + dB	0	1 3/8 x 3 1/2 x 3 35 x 89 x 77	3 1.4
7440/2 \$435.00	Single Isolator, 15 Watt Load	150-225	30 W 15 W	See Page 38 Figure 3 & 4	0.30 dB	35 + dB	15 W	1 3/8 x 3 1/2 x 4 1/8 35 x 89 x 105	3 1.4
7440/3 \$450.00	Single Isolator, 30 Watt Load	150-225	50 W 30 W	See Page 38 Figure 3 & 4	0.30 dB	35 + dB	30 W	1 3/8 x 3 1/2 x 4 1/8 35 x 89 x 105	3 1.4
7440/4 \$480.00	Single Isolator, 60 Watt Load	150-225	50 W 50 W	See Page 38 Figure 3 & 4	0.30 dB	35 + dB	60 W	1 3/8 x 3 1/2 x 5 5/8 35 x 89 x 143	3 1.4
7450/0 \$420.00	Circulator, 125 Watts	150-225	125 W -	See Page 38 Figure 3 & 4	0.30 dB	35 + dB	0	1 3/8 x 3 1/2 x 3 35 x 89 x 77	3 1.4
7450/4 \$510.00	Single Isolator, 60 Watt Load	150-225	125 W 60 W	See Page 38 Figure 3 & 4	0.30 dB	35 + dB	60 W	1 3/8 x 3 1/2 x 5 5/8 35 x 89 x 143	3 1.4
7450/4A \$525.00	Single Isolator, 75 Watt Load	150-225	125 W 75 W	See Page 38 Figure 3 & 4	0.30 dB	35 + dB	75 W	1 1/2 x 3 1/2 x 6 3/4 39 x 89 x 172	4 1.9
7450/5 \$720.00	Single Isolator, 125 Watt Load	150-225	125 W 125 W	See Page 38 Figure 3 & 4	0.30 dB	35 + dB	125 W	3 1/2 x 11 x 10 1/2 89 x 280 x 267	7 3.2
7450/0H \$475.00	Circulator, 150 Watts	150-225	150 W -	See Page 38 Figure 3 & 4	0.30 dB	35 + dB	0	2 3/4 x 3 1/2 x 3 70 x 89 x 77	3 1.4
7450/4AH \$580.00	Single Isolator, 75 Watt Load	150-225	150 W 75 W	See Page 38 Figure 3 & 4	0.30 dB	35 + dB	75 W	2 3/4 x 3 1/2 x 6 3/4 70 x 89 x 172	4 1.9

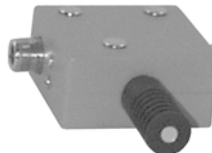
7430/1S



7440/0



7440/2



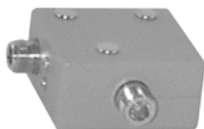
7440/3



7440/4



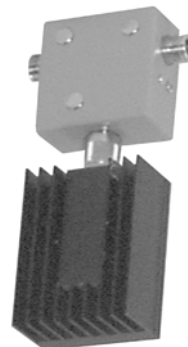
7450/0



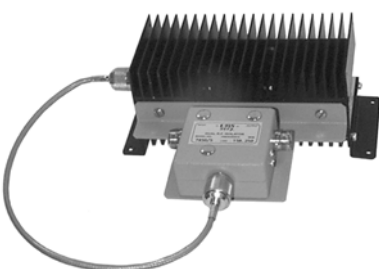
7450/4



7450/4A



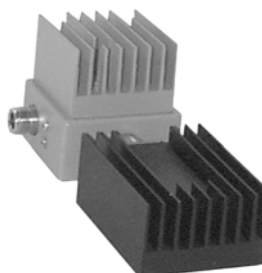
7450/5



7450/0H



7450/4AH

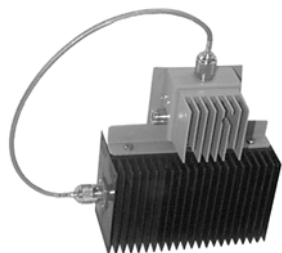


# INTERMODULATION CONTROL DEVICES

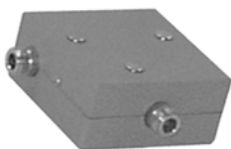
## 150 - 225 MHz

Model No. List Price	Description	Frequency	Pwr: Input Refl	Bandwidth: Fixed	Insertion Loss	Isolation	Load Termination	Actual Dimensions Inches Metric	Ship Wt. lbs kg.
7450/5AH \$825.00	Single Isolator, 150 Watt Load	150-225	150 W 150 W	See Page 38 Figure 3 & 4	0.30 dB	35 + dB	150 W	3 1/4 x 11 x 10 1/2 83 x 280 x 267	8 3.7
7460/0 \$670.00	Circulator, 200 Watts	150-225	200 W -	See Page 39 Figure 1 & 2	0.30 dB	35 + dB	0	1 5/8 x 4 1/2 x 4 42 x 115 x 102	4 1.9
7460/5 \$965.00	Single Isolator, 125 Watt Load	150-225	200 W 125 W	See Page 39 Figure 1 & 2	0.30 dB	35 + dB	125 W	3 1/2 x 12 x 10 89 x 305 x 254	8 3.7
7460/6 \$1,165.00	Single Isolator, 250 Watt Load	150-225	200 W 200 W	See Page 39 Figure 1 & 2	0.30 dB	35 + dB	250 W	5 1/4 x 11 x 6 134 x 280 x 153	12 5.5
7460/0H \$730.00	Circulator, 250 Watts	150-225	250 W -	See Page 39 Figure 1 & 2	0.30 dB	35 + dB	0	3 3/8 x 4 1/2 x 4 86 x 115 x 102	4 1.9
7460/5H \$1,025.00	Single Isolator, 125 Watt Load	150-225	250 W 125 W	See Page 39 Figure 1 & 2	0.30 dB	35 + dB	125 W	6 3/4 x 11 x 5 172 x 280 x 127	8 3.7
7460/6H \$1,225.00	Single Isolator, 250 Watt Load	150-225	250 W 250 W	See Page 39 Figure 1 & 2	0.30 dB	35 + dB	250 W	6 3/4 x 11 1/2 x 6 1/2 172 x 293 x 166	12 5.5
7460/5HF \$1,270.00	Single Isolator, 125 Watt Load	150-225	250 W 125 W	See Page 39 Figure 1 & 2	0.30 dB	35 + dB	125 W	10 1/2 x 19 x 11 1/2 267 x 483 x 293	12 5.5
7460/6HF \$1,465.00	Single Isolator, 250 Watt Load	150-225	250 W 250 W	See Page 39 Figure 1 & 2	0.30 dB	35 + dB	250 W	10 1/2 x 19 x 11 1/2 267 x 483 x 293	16 7.3

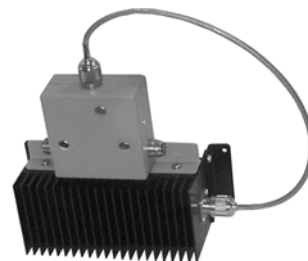
7450/5AH



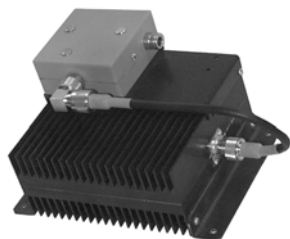
7460/0



7460/5



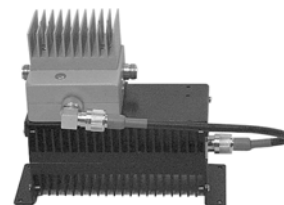
7460/6



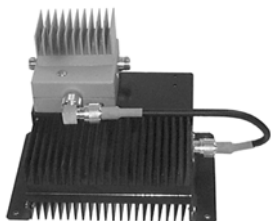
7460/0H



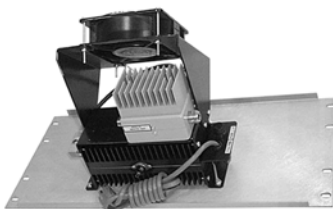
7460/5H



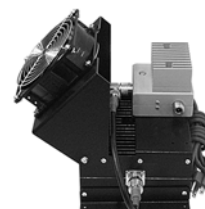
7460/6H



7460/5HF



7460/6HF

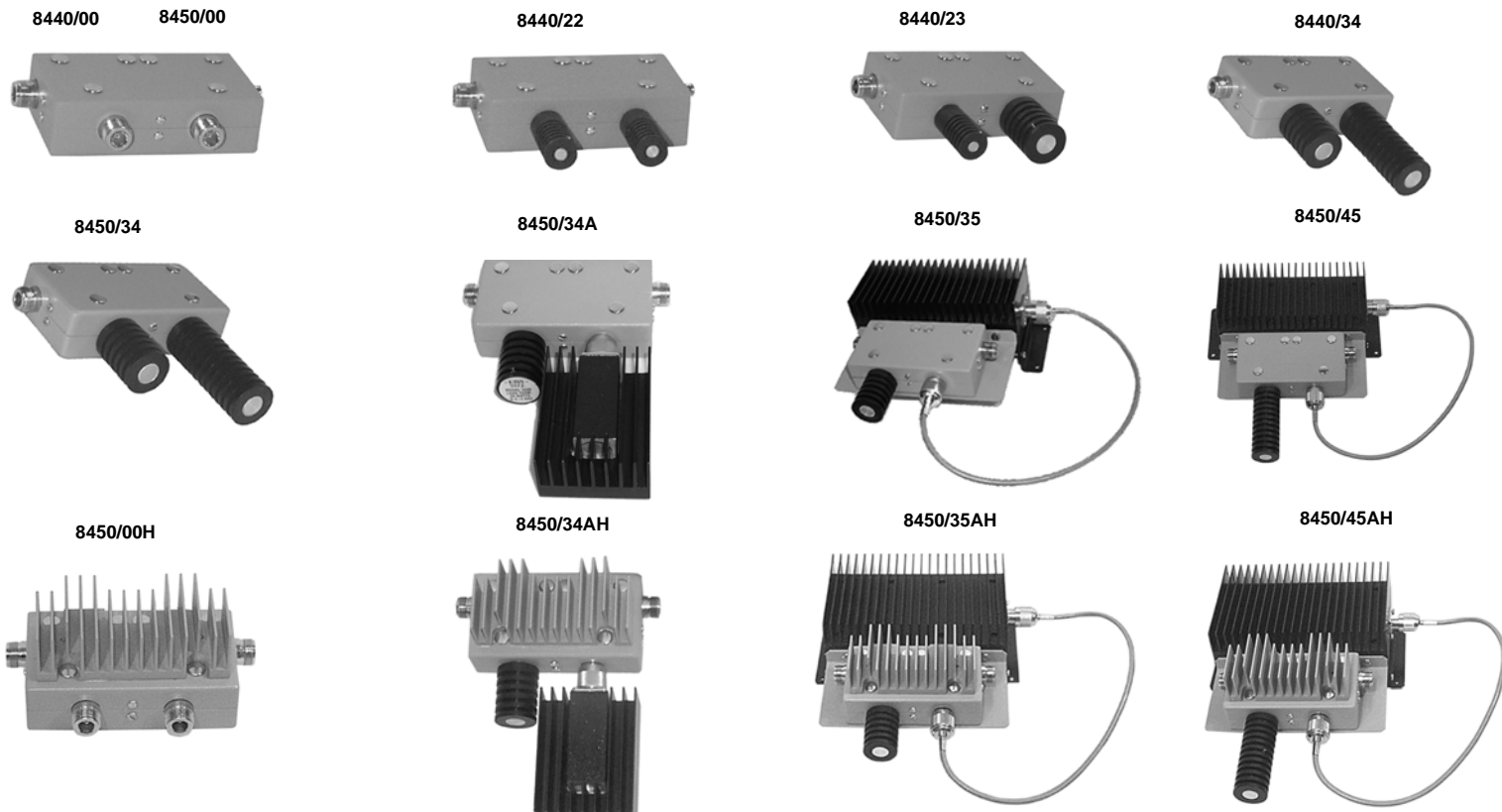


# INTERMODULATION CONTROL DEVICES

## 150 - 225 MHz

ISOLATORS & CIRCULATORS

Model No. List Price	Description	Frequency	Pwr: Input Refl	Bandwidth: Fixed	Insertion Loss	Isolation	Load Termination	Actual Dimensions Inches Metric	Ship Wt. lbs kg.
8440/00 \$615.00	Dual Circulator, 50 Watts	150-225	50 W -	See Page 42 Figure 1 & 2	0.45 dB	70+ dB	0	1 1/2 x 5 1/2 x 3 39 x 140 x 77	3 1.4
8440/22 \$705.00	Dual Isolator, 15/15 Watt Load	150-225	30 W 15 W	See Page 42 Figure 1 & 2	0.45 dB	70+ dB	15/15 W	1 1/2 x 5 1/2 x 4 1/8 39 x 140 x 105	3 1.4
8440/23 \$720.00	Dual Isolator, 15/30 Watt Load	150-225	50 W 30 W	See Page 42 Figure 1 & 2	0.45 dB	70+ dB	15/30 W	1 1/2 x 5 1/2 x 4 1/8 39 x 140 x 105	3 1.4
8440/34 \$765.00	Dual Isolator, 30/60 Watt Load	150-225	50 W 50 W	See Page 42 Figure 1 & 2	0.45 dB	70+ dB	30/60 W	1 1/2 x 5 1/2 x 5 5/8 39 x 140 x 143	3 1.4
8450/00 \$660.00	Dual Circulator, 125 Watts	150-225	125 W -	See Page 42 Figure 3 & 4	0.45 dB	70+ dB	0	1 1/2 x 5 1/2 x 3 39 x 140 x 77	3 1.4
8450/34 \$810.00	Dual Isolator, 30/60 Watt Load	150-225	125 W 60 W	See Page 42 Figure 3 & 4	0.45 dB	70+ dB	30/60 W	1 1/2 x 5 1/2 x 5 5/8 39 x 140 x 143	4 1.9
8450/34A \$825.00	Dual Isolator, 30/75 Watt Load	150-225	125 W 75 W	See Page 42 Figure 3 & 4	0.45 dB	70+ dB	30/75 W	1 1/2 x 5 1/2 x 6 3/4 39 x 140 x 172	5 2.3
8450/35 \$1,000.00	Dual Isolator, 30/125 Watt Load	150-225	125 W 125 W	See Page 42 Figure 3 & 4	0.45 dB	70+ dB	30/125 W	3 1/2 x 12 x 10 89 x 305 x 254	7 3.2
8450/45 \$1,030.00	Dual Isolator, 60/125 Watt Load	150-225	125 W 125 W	See Page 42 Figure 3 & 4	0.45 dB	70+ dB	60/125 W	3 1/2 x 12 x 10 89 x 305 x 254	7 3.2
8450/00H \$720.00	Dual Circulator, 150 Watts	150-225	150 W -	See Page 42 Figure 3 & 4	0.45 dB	70+ dB	0	2 3/4 x 5 1/2 x 3 70 x 140 x 77	3 2.3
8450/34AH \$875.00	Dual Isolator, 30/75 Watt Load	150-225	150 W 75 W	See Page 42 Figure 3 & 4	0.45 dB	70+ dB	30/75 W	2 3/4 x 5 1/2 x 6 3/4 70 x 140 x 172	5 2.3
8450/35AH \$1,120.00	Dual Isolator, 30/150 Watt Load	150-225	150 W 150 W	See Page 42 Figure 3 & 4	0.45 dB	70+ dB	30/150 W	3 3/4 x 11 1/2 x 10 1/2 96 x 293 x 267	9 4.1
8450/45AH \$1,145.00	Dual Isolator, 60/150 Watt Load	150-225	150 W 150 W	See Page 42 Figure 3 & 4	0.45 dB	70+ dB	60/150 W	3 3/4 x 11 1/2 x 10 1/2 96 x 293 x 267	9 4.1

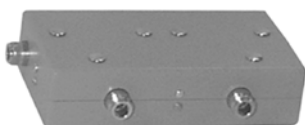


# INTERMODULATION CONTROL DEVICES

## 150 - 225 MHz

Model No. List Price	Description	Frequency	Pwr: Input Refl	Bandwidth: Fixed	Insertion Loss	Isolation	Load Termination	Actual Dimensions Inches Metric	Ship Wt. lbs kg.
8460/00 \$1,150.00	Dual Circulator, 200 Watts	150-225	200 W -	See Page 43 Figure 1 & 2	0.45 dB	70+ dB	0	1 5/8 x 7 1/2 x 4 42 x 191 x 102	5 2.3
8460/45 \$1,530.00	Dual Isolator, 60/125 Watt Load	150-225	200 W 125 W	See Page 43 Figure 1 & 2	0.45 dB	70+ dB	60/125 W	5 1/4 x 10 1/2 x 7 1/2 134 x 267 x 191	10 4.6
8460/46 \$1,730.00	Dual Isolator, 60/250 Watt Load	150-225	200 W 200 W	See Page 43 Figure 1 & 2	0.45 dB	70+ dB	60/250 W	5 1/4 x 8 x 9 1/4 134 x 204 x 235	12 5.5
8460/00H \$1,220.00	Dual Circulator, 250 Watts	150-225	200 W -	See Page 43 Figure 1 & 2	0.45 dB	70+ dB	0	3 1/8 x 7 1/2 x 4 80 x 191 x 102	5 2.3
8460/45H \$1,605.00	Dual Isolator, 60/125 Watt Load	150-225	250 W 125 W	See Page 43 Figure 1 & 2	0.45 dB	70+ dB	60/125 W	8 3/4 x 19 x 6 3/4 223 x 483 x 172	12 5.5
8460/46H \$1,805.00	Dual Isolator, 60/250 Watt Load	150-225	250 W 250 W	See Page 43 Figure 1 & 2	0.45 dB	70+ dB	60/250 W	6 3/4 x 8 x 9 1/4 172 x 204 x 235	12 5.5
8460/45HF \$1,845.00	Dual Isolator, 60/125 Watt Load	150-225	250 W 125 W	See Page 43 Figure 1 & 2	0.45 dB	70+ dB	60/125 W	10 1/2 x 19 x 9 1/2 267 x 483 x 242	14 6.4
8460/46HF \$2,045.00	Dual Isolator, 60/250 Watt Load	150-225	250 W 250 W	See Page 43 Figure 1 & 2	0.45 dB	70+ dB	60/250 W	10 1/2 x 19 x 9 1/2 267 x 483 x 242	18 8.2

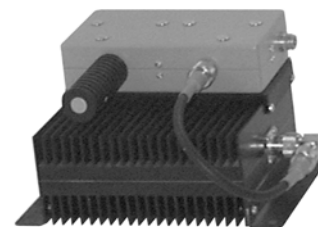
8460/00



8460/45



8460/46



8460/00H



8460/45H



8460/46H



8460/45HF  
Panel Mounted



8460/46HF

