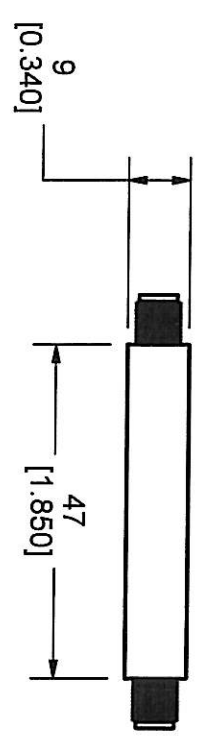
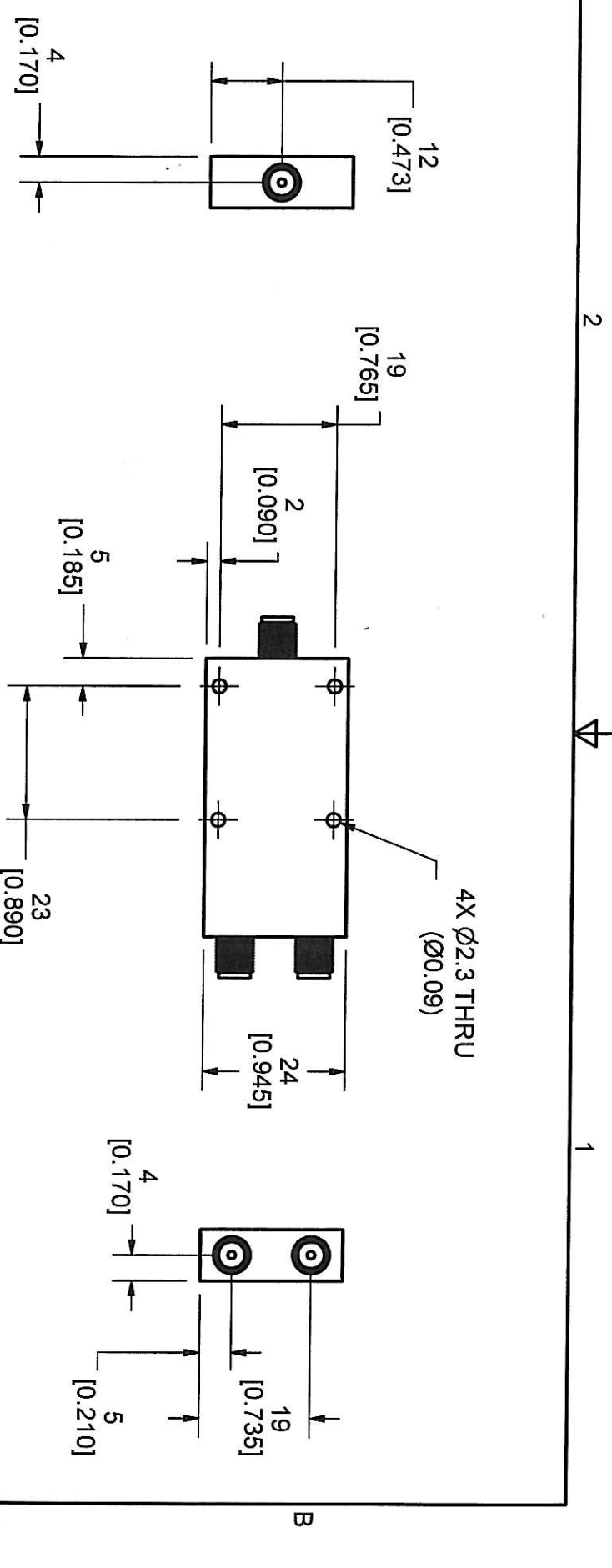

**TRILITHIC**  
**Specification Sheet**  
**MODEL XWPD-522-18-SMA-R**  
**2-Way Broadband Power Divider**

**Frequency Range:** 2-18GHz  
**Impedance:** 50 Ohms nominal  
**Configuration:** 2-Way  
**Isolation:** 16dB minimum  
**Insertion Loss:** 1.2 dB maximum  
 (above theoretical split)  
**Amplitude Tracking:** +/- 0.3dB maximum  
**Phase Tracking:** +/- 5 deg. maximum  
**VSWR:** 1.50:1 maximum  
**Power Input:** 30 Watts  
**RF Connectors:** SMA Female  
**Operating Temperature:** -55 deg. to +85deg. C

ECR/PRR #	Date	APPR

Approved By: \_\_\_\_\_

**Approved Internet/Email Copy**



DIMENSIONS ARE IN INCHES UNLESS OTHERWISE SPECIFIED.  
TOLERANCES ARE:

DEC. XX ±	FRAC ±
.XXX ± .005	ANG ±

REMOVE BURRS, BREAK SHARP EDGES.

THIS PRINT INCLUDING THE PRINCIPLE OF DESIGN IS THE PROPERTY OF AND SUBMITTED BY TRILITHIC CORP. WITH THE UNDERSTANDING THAT IT IS NOT TO BE USED FOR ANY PURPOSE WITHOUT WRITTEN CONSENT

SIGNATURES

DR	DATE
CHK	
APPD	
APPD	

**TRILITHIC**  
Indianapolis, Indiana, U.S.A.  
**XWPD-522-18-SMA-R**

SIZE	CAGE	DWG NO.	REV
A	23042	---	-

DO NOT SCALE DRAWING

SCALE	SHEET 1 OF 1
-------	--------------