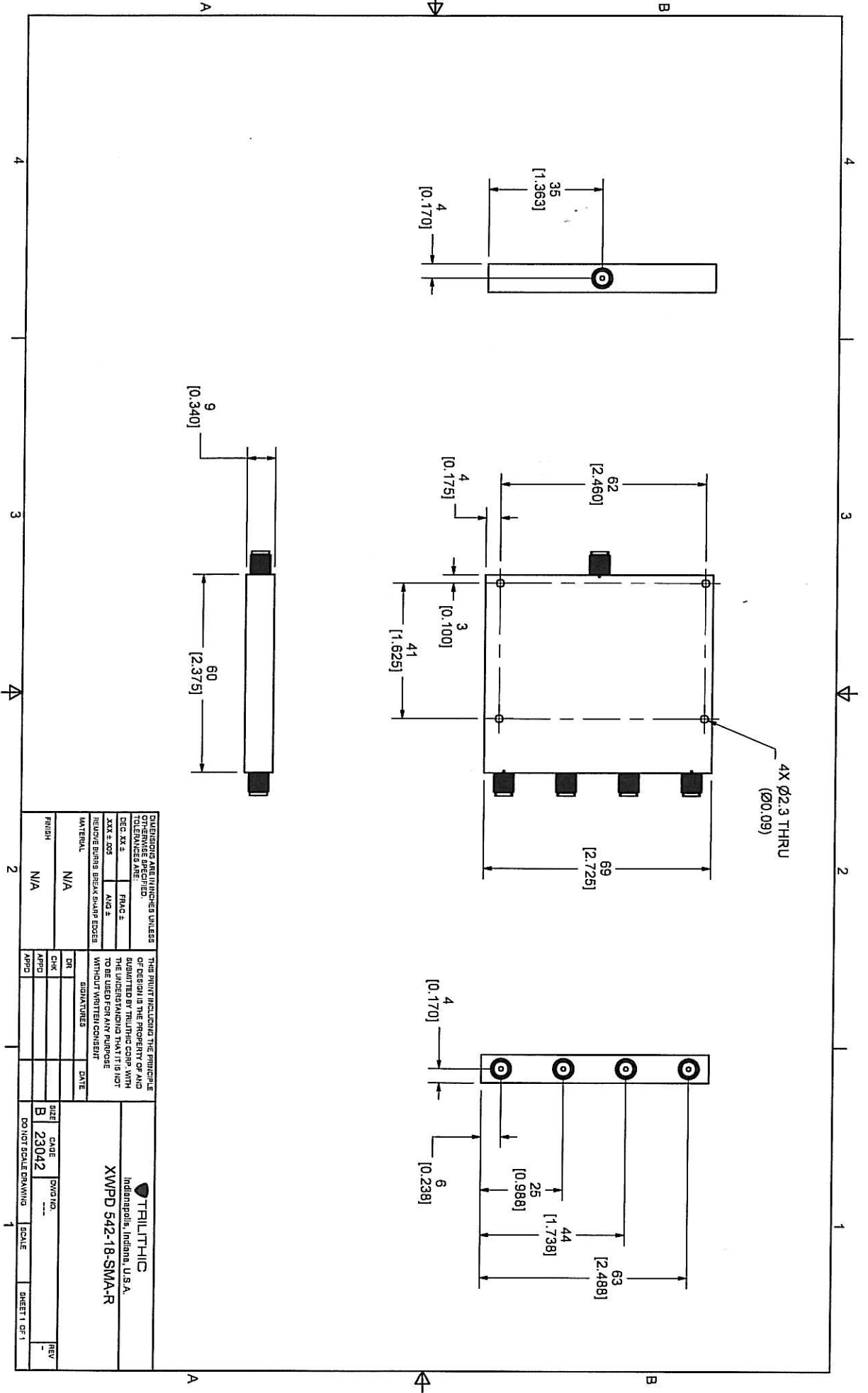
 **TRILITHIC**  
Specification Sheet  
**MODEL XWPD-542-18-SMA-R**  
**4-Way Broadband Power Divider**

**Frequency Range:** 2-18GHz  
**Impedance:** 50 Ohms nominal  
**Configuration:** 4-Way  
**Isolation:** 16dB minimum  
**Insertion Loss:** 2.2 dB maximum  
(above theoretical split)  
**Amplitude Tracking:** +/- 0.6dB maximum  
**Phase Tracking:** +/- 10 deg. maximum  
**VSWR:** 1.70:1 maximum  
**Power Input:** 30 Watts  
**RF Connectors:** SMA Female  
**Operating Temperature:** -55 deg. to +85deg. C

ECR/PRR #	Date	APPR

Approved By: \_\_\_\_\_

**Approved Internet/Email Copy**



DIMENSIONS ARE IN INCHES UNLESS OTHERWISE SPECIFIED.		TOLERANCES ARE:		THIS PRINT INCLUDING THE FINISHES OF DESIGN IS THE PROPERTY OF AND SHALL BE RETURNED TO THE COMPANY IF NOT SUBMITTED BY THE DESIGNING ENGINEER WITHIN THE SPECIFIED TIME FRAME.	
DEC. XX ±	FRAC. ±	XXX ±.005	ANG. ±	DATE	SCALE
REMOVE BURRS BREAK SHARP EDGES		WITHOUT WRITTEN CONSENT		DATE	SCALE
MATERIAL		SIGNATURES		DATE	SCALE
FINISH		DR	CHK	APPD	REV
N/A					
N/A					
N/A					
N/A					

Indianapolis, Indiana, U.S.A.

**XWPD 542-18-SMA-R**

SIZE: B 23042  
 CAD: 23042  
 DWG NO.: ---  
 DO NOT SCALE DRAWING SCALE: SHEET 1 OF 1