 **TRILITHIC**  
**Specification Sheet**  
**MODEL XWPD-581-4-SMA-R**  
**8-Way Broadband Power Divider**

**Frequency Range:** 1-4GHz

**Impedance:** 50 Ohms nominal

**Configuration:** 8-Way

**Isolation:** 20dB minimum

**Insertion Loss:** 1.5 dB maximum  
(above theoretical split)

**Amplitude Tracking:** +/- 0.4dB maximum

**Phase Tracking:** +/- 4 deg. maximum

**VSWR:** 1.35:1 maximum

**Power Input:** 30 Watts

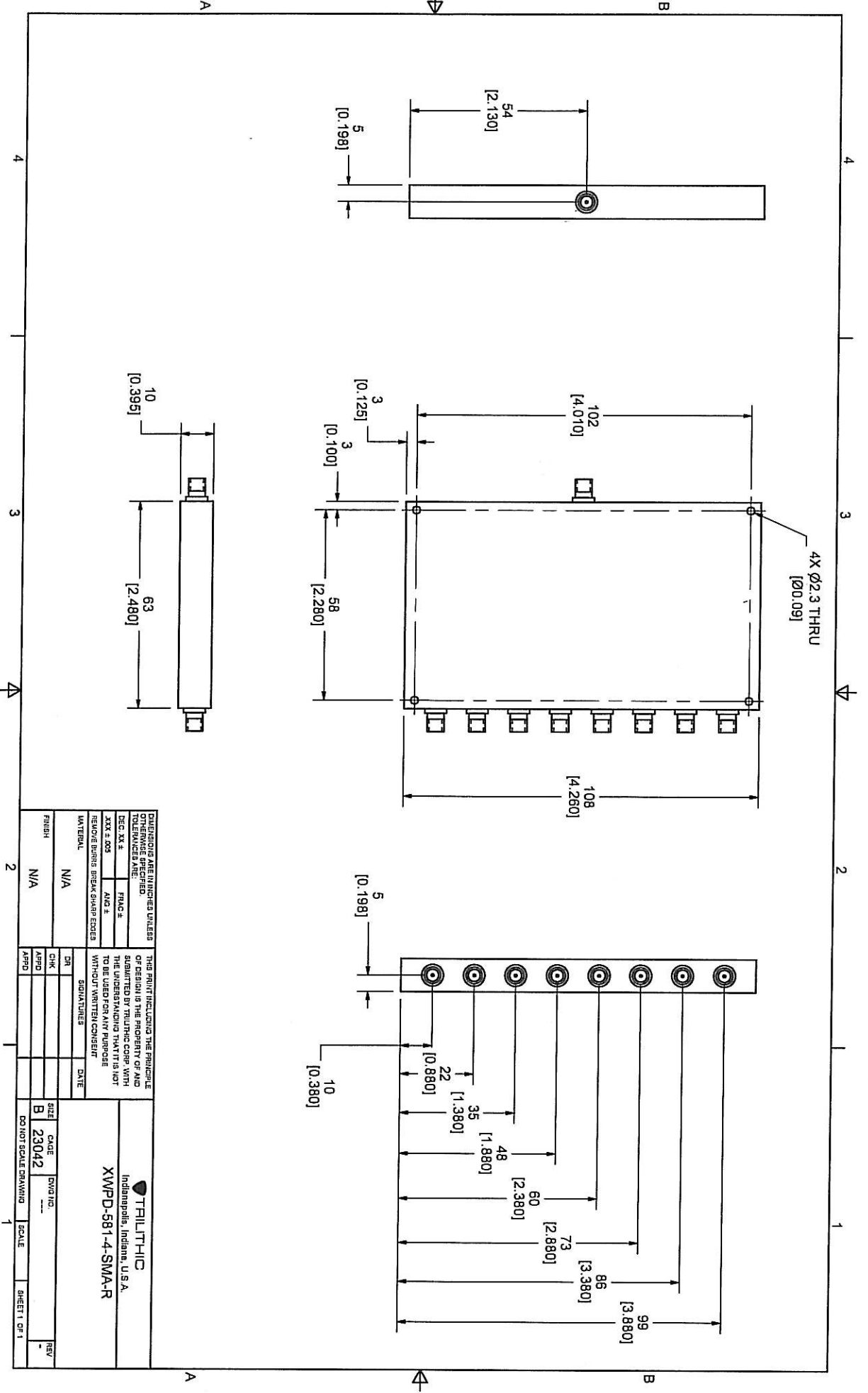
**RF Connectors:** SMA Female

**Operating Temperature:** -55 deg. to +85deg. C

ECR/PRR #	Date	APPR

**Approved By:** \_\_\_\_\_

**Approved Internet/Email Copy**



DIMENSIONS ARE IN INCHES UNLESS OTHERWISE SPECIFIED		TOLERANCES ARE:		THIS PRINT INCLUDING THE PRINCIPLE OF DESIGN IS THE PROPERTY OF AND IS LOANED TO THE USER BY THE USER TO BE USED FOR ANY PURPOSE WITHOUT WRITTEN CONSENT	
DEC. XX ±	FRACTION	DEC. XX ±	FRACTION	CHK	DATE
XXX ±.003	AND ±	XXX ±.003	AND ±	APPD	DATE
REMOVE BURRS BREAK SHARP EDGES		REMOVE BURRS BREAK SHARP EDGES		DRAWN/ISS	
MATERIAL		MATERIAL		DATE	
FINISH		FINISH		DATE	
N/A		N/A		DATE	
N/A		N/A		DATE	

 Indianapolis, Indiana, U.S.A.		XWPD-5814-SMA-R	
SIZE	DATE	DWG NO.	REV
B	23042		
DO NOT SCALE DRAWING		SCALE	SHEET 1 OF 1