

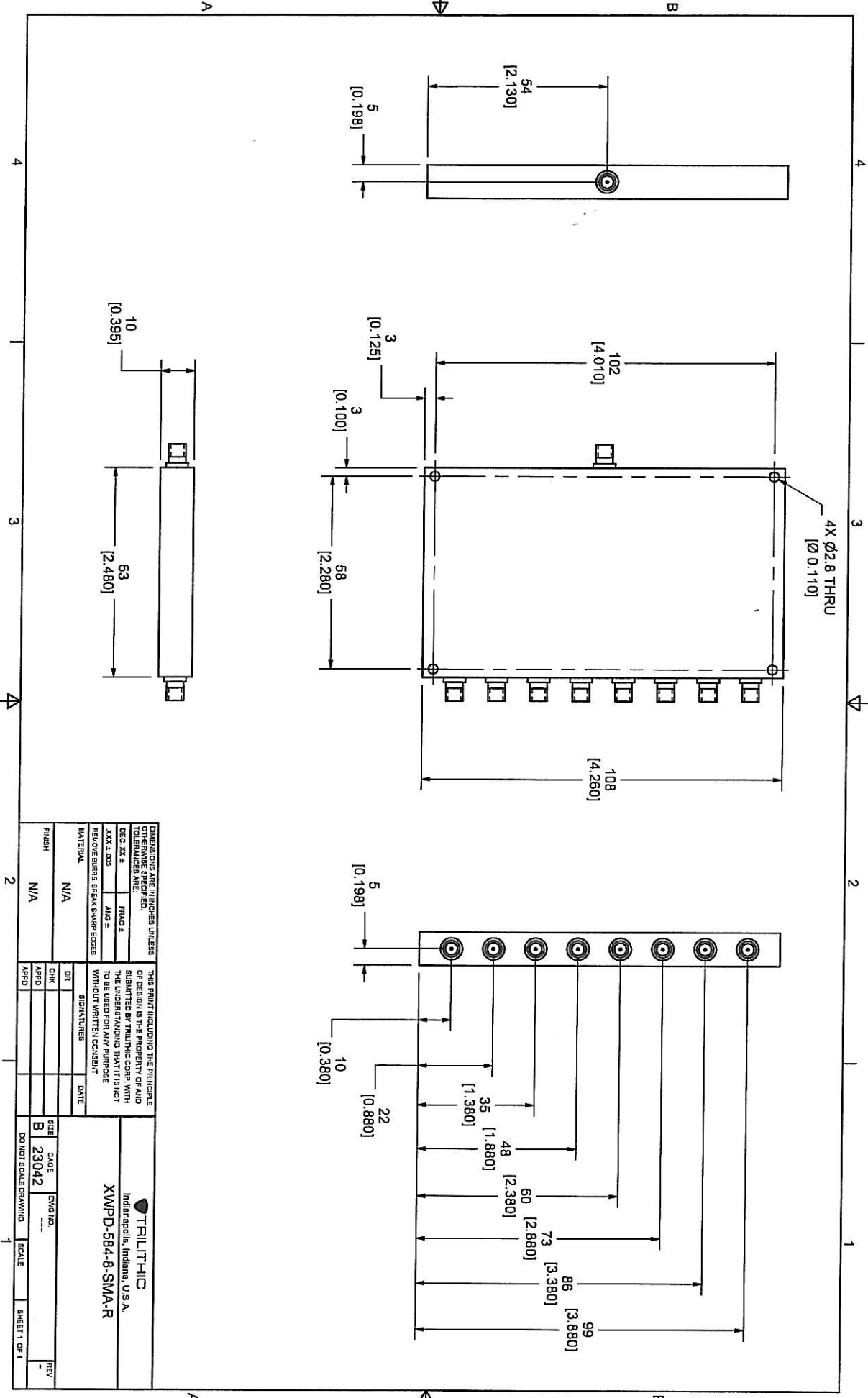

TRILITHIC
 Specification Sheet
MODEL XWPD-584-8-SMA-R
8-Way Broadband Power Divider

Frequency Range: 4-8GHz
Impedance: 50 Ohms nominal
Configuration: 8-Way
Isolation: 18dB minimum
Insertion Loss: 1.2 dB maximum
 (above theoretical split)
Amplitude Tracking: +/- 0.4dB maximum
Phase Tracking: +/- 4 deg. maximum
VSWR: 1.50:1 maximum
Power Input: 30 Watts
RF Connectors: SMA Female
Operating Temperature: -55 deg. to +85deg. C

ECR/PRR #	Date	APPR

Approved By: _____

Approved Internet/Email Copy



DIMENSIONS AND TOLERANCES UNLESS OTHERWISE SPECIFIED TOLERANCES ARE: DEC. XX ± FINC ± XXX ±.005 AND ± REMOVE BURRS BREAK SHARP EDGES		THIS PRINT INCLUDING THE PRINCIPLE OR DESIGN IS THE PROPERTY OF AND SUBMITTED BY TRILITHIC CORP. WITH THE UNDERSTANDING THAT IT IS NOT TO BE REPRODUCED OR TRANSMITTED IN ANY FORM OR BY ANY MEANS WITHOUT WRITTEN CONSENT		TRILITHIC Indianapolis, Indiana, U.S.A. XWPD-584-B-SMA-R	
MATERIAL	N/A	DATE		SCALE	
FINISH	N/A	CHK		DO NOT SCALE DRAWING	
		APPD		SCALE	
				SHEET 1 OF 1	