 **TRILITHIC**
Specification Sheet
MODEL XWPD-586-18-SMA-R
8-Way Broadband Power Divider

Frequency Range: 6-18GHz

Impedance: 50 Ohms nominal

Configuration: 8-Way

Isolation: 17dB minimum

Insertion Loss: 2.1dB maximum
 (above theoretical split)

Amplitude Tracking: +/- 0.8dB maximum

Phase Tracking: +/- 10 deg. maximum

VSWR: 1.80:1 maximum

Power Input: 30 Watts

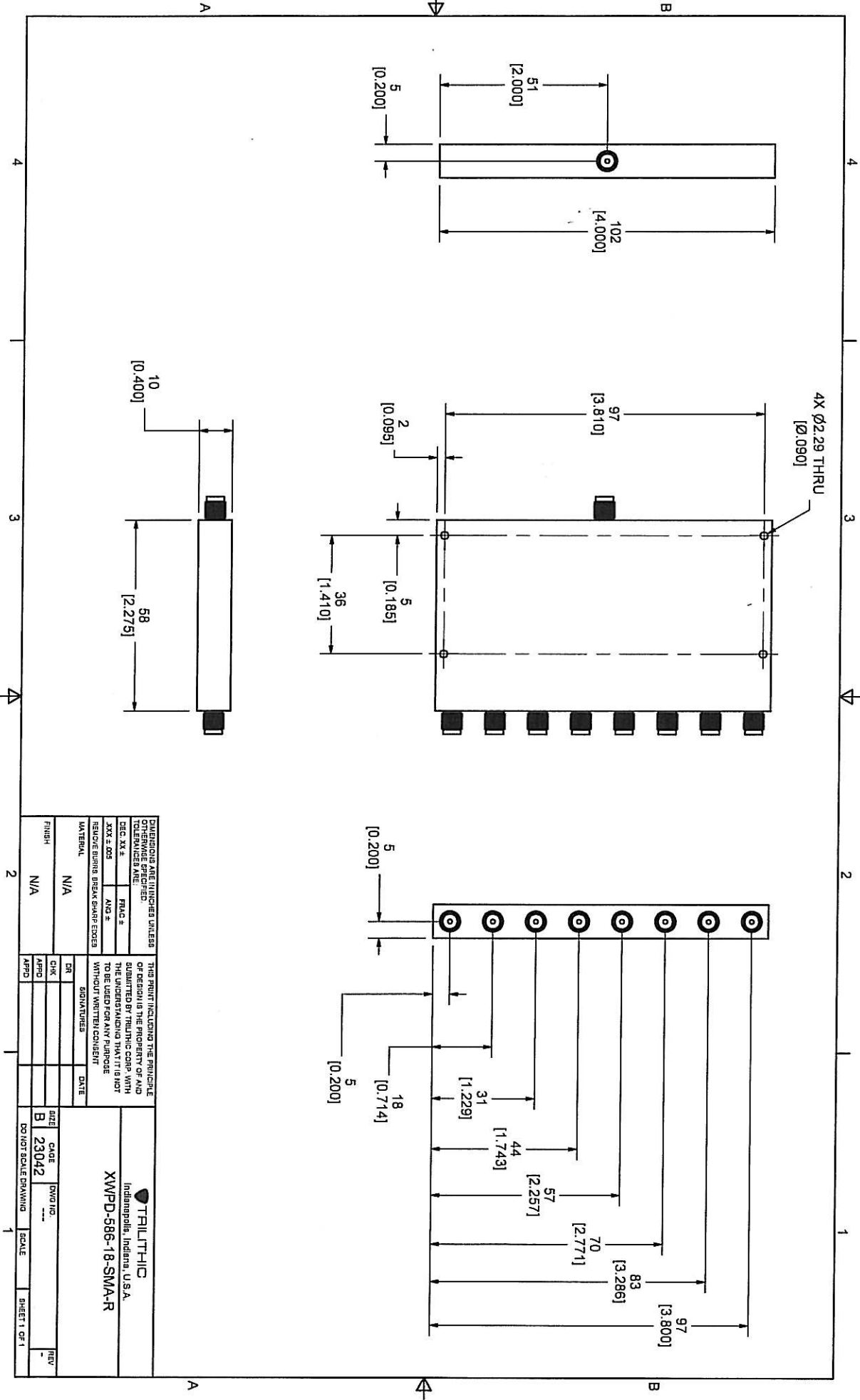
RF Connectors: SMA Female

Operating Temperature: -55 deg. to +85deg. C

ECR/PRR #	Date	APPR

Approved By: _____

Approved Internet/Email Copy



DIMENSIONS ARE IN INCHES UNLESS OTHERWISE SPECIFIED		TOLERANCES ARE:		THIS PRINT INCLUDING THE PRINCIPLE OF SERVICE IS THE PROPERTY OF AND IS TO BE RETURNED TO THE COMPANY IF NOT TO BE USED FOR ANY PURPOSE WITHOUT WRITTEN CONSENT.	
DEC. XX ±	FRAC. ±	ANG. ±	XXX ±.005	DR	DATE
				CHK	
				APPD	
				APPD	
MATERIAL		FINISH		SIZE	SCALE
N/A		N/A		B	DO NOT SCALE DRAWING
				23042	SCALE
				---	SHEET 1 OF 1
				---	REV

TRILITHIC
Indianapolis, Indiana, U.S.A.
XWPD-586-18-SMA-R