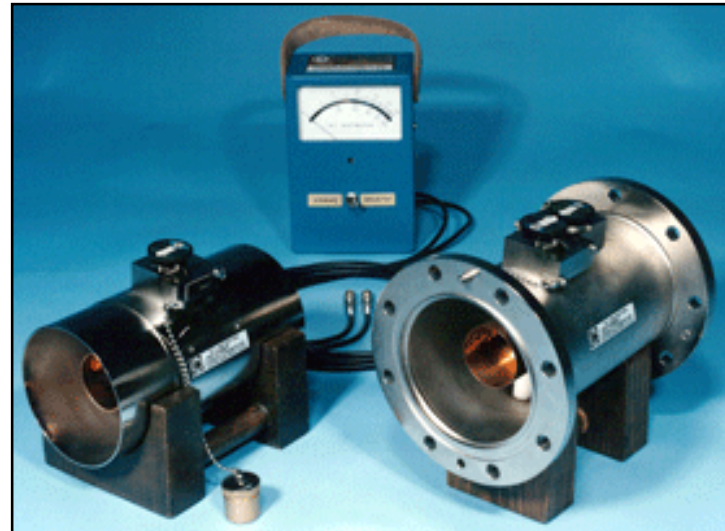


# *High-Power Rigid Line Directional RF Wattmeters For 4-1/16" Line Size*

## **Features**

- Shock Mounted "Taut Band" Meter
- 4-1/2" Mirrored Scale
- Uses Standard Gold Plated [Plug-In Elements](#)
- Two Year Limited Warranty



[\[View Larger\]](#)

## **Description**

The 81400-A series of High-Power Directional RF Wattmeters are designed to measure RF power in 50-Ohm 4-1/16" coaxial transmission lines.

To use the Wattmeter, simply connect it between the transmitter and antenna or dummy load and plug in the appropriate measuring element. The RF power is directly displayed on the 4-1/2" triple scale meter.

Several different models are available with either 5/10/25 scales or 15/30/60 scales. The external Line Section can be used up to 200-feet from the meter with the permanently attached DC cables (10-foot normally supplied). The meter unit is protected by a rugged, shock-proof housing. For added convenience, two sockets for storage of additional measuring elements are located on the back of the unit.

The use of a rugged shock mounted meter with a mirror-backed scale along with superior taut band technology, provides reliable and accurate readings, and also satisfies both the US Navy and Canadian standards for bounce and vibration. This is your assurance of complete accuracy.

Your confidence in the quality and dependability of the 81400-A series of Wattmeters is assured with the Coaxial Dynamics Two Year Limited Warranty.

## **Available Models With 5/10/25 Scales**

**Model 81400-A**

Wattmeter with 4-1/16" Single Socket EIA Flanged Line Section.

**Model 81401-A**

Wattmeter with 4-1/16" Single Socket Unflanged Flush Line Section.

**Model 81402-A**

Wattmeter with FWD/RFL switch and 4-1/16" Dual Socket EIA Flanged Line Section.

**Model 81403-A**

Wattmeter with FWD/RFL switch and 4-1/16" Dual Socket Unflanged Flush Line Section.

**Model 81411-A**

Wattmeter with 4-1/16" Single Socket Unflanged Recessed Line Section.

**Model 81413-A**

Wattmeter with FWD/RFL switch and 4-1/16" Dual Socket Unflanged Recessed Line Section.

■ *All Wattmeters listed above use [5/10/25 scale elements](#).*

**Available Models With 15/30/60 Scales****Model 81406-A**

Wattmeter with 4-1/16" Single Socket EIA Flanged Line Section.

**Model 81407-A**

Wattmeter with 4-1/16" Single Socket Unflanged Flush Line Section.

**Model 81408-A**

Wattmeter with FWD/RFL switch and 4-1/16" Dual Socket EIA Flanged Line Section.

**Model 81409-A**

Wattmeter with FWD/RFL switch and 4-1/16" Dual Socket Unflanged Flush Line Section.

**Model 81415-A**

Wattmeter with 4-1/16" Single Socket Unflanged Recessed Line Section.

**Model 81417-A**

Wattmeter with FWD/RFL switch and 4-1/16" Dual Socket Unflanged Recessed Line Section.

■ *All Wattmeters listed above use [15/30/60 scale elements](#).*

**Specifications**

Power Range	2500 W to 60 kW
Frequency Range	50 MHz to 1000 MHz
Accuracy	±5% of full scale
Impedance	50-Ohms
Case Finish	Textured Blue Polyurethane Enamel
Line Section Finish	Bright Silver Plate
Dimensions (H x W x D) (Meter only)	7.3 in x 5 in x 4 in 18.5 cm x 12.7 cm x 10.2 cm
Weight (Meter only)	2.5 lbs. (1.13 kg)

[general documents/SUPPLIERS/COAXIAL/specs for online catalogue/Directional Wattmeters/footer.htm]