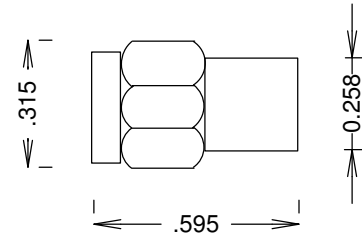


SPECIFICATIONS

ELECTRICAL:

FREQUENCY: 0-18 GHZ
 VSWR @ 4 GHZ: 1.1:1 MAX
 VSWR @ 18GHZ: 1.35:1 TYPICAL
 POWER (AVG) 1.0 WATTS @ 25 DEG C;
 1/2 WATT @ 125 DEG C
 POWER (PEAK) 1KW/50 MICRO-S
 IMPEDANCE: 50 OHMS
 OP. TEMP RANGE: -55C- +125C



MECHANICAL:

MATERIAL COUPLING NUT: PASSIVATED STAINLESS STEEL
 MATERIAL BODY: GOLD PLATED BRASS
 CENTER CONTACT: GOLD PLATED PER MIL-G-45204
 RESISTIVE ELEMENT: THIN FILM ON ALUMINA SUBSTRATE

				S. M. ELECTRONICS	
				FAIRVIEW, TX 76069 WWW.SMELECTRONICS.US	
				TITLE	
				TERMINATION 18GHZ SMA-MALE	
SIZE		CAGE CODE	DWG NO		REV
A			ST1810		A
SCALE					SHEET